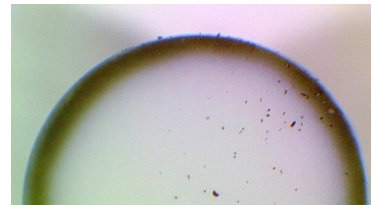




Alvacat has outstanding knowledge on proprietary shell formation methods. Physical and wet chemical shell types are available. Alvacat uses liquid and gas phase reduction procedures to finish the catalysts. All recipes are being developed by high-throughput screening technologies.

AlvaBimet Pt 0.2-Pd 0.6

Specification: 090320.1



Type : core shell catalyst

Core:

Phase:

Shape:

Diameter:

BET:

gamma-alumina

spherical

1.8 mm

210 m²/g

Shell:

Pt content:

Pd content:

Shell-thickness:

0.2 wt-%

0.6 wt-%

100 μm

Besides the standard material, any other (customized) metal loading and shell thickness are available upon request.

The information herein does not constitute a guarantee or warranty. Alvacat's warranty is set forth in its standard terms and conditions which govern sales of Alvacat products. The standard terms are set forth in Alvacat quotations and acknowledgements and are also available upon request.